

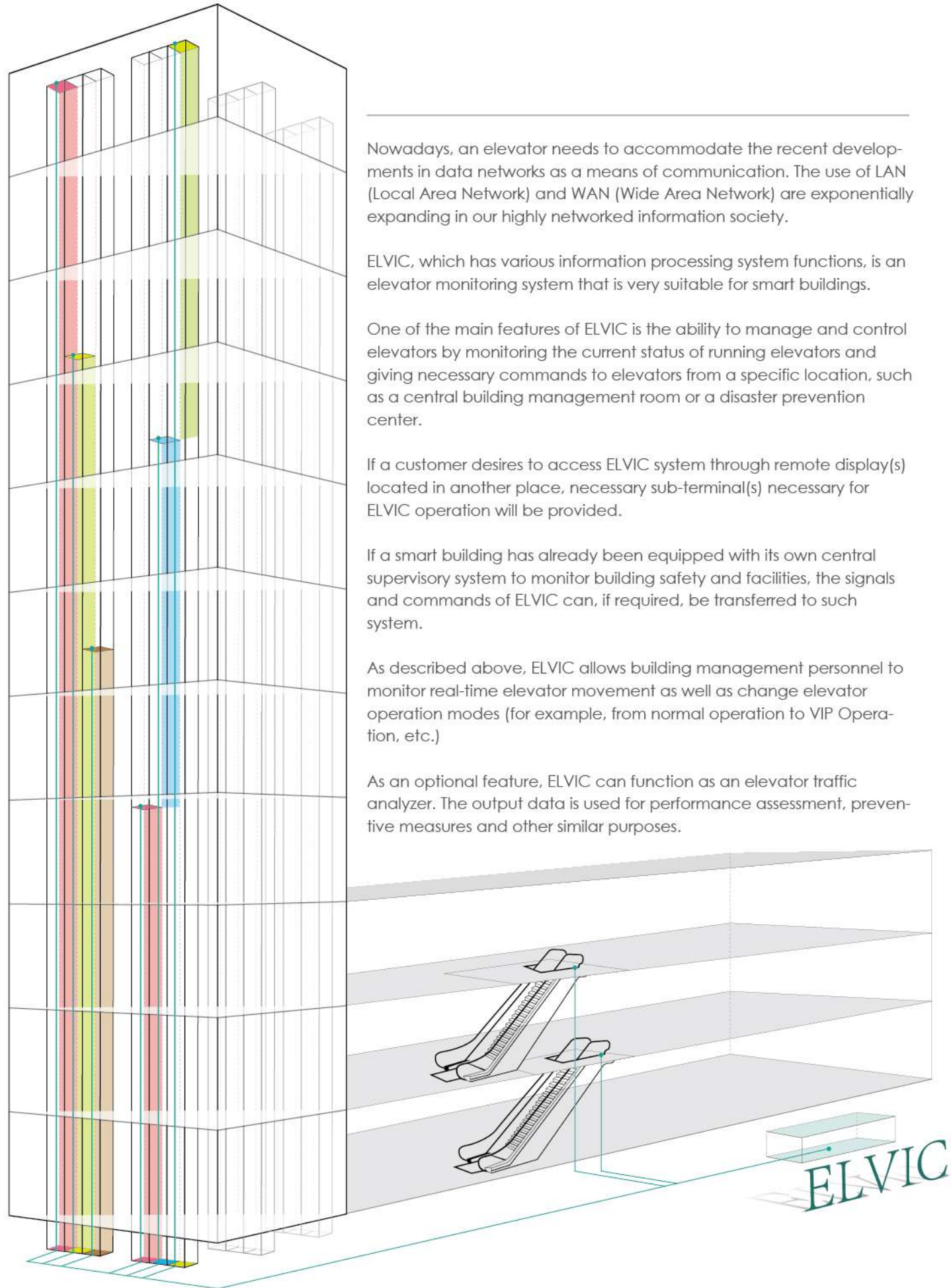
FUJITEC



elevator visual communication system  
**ELVIC**

Remote Elevator Monitoring and Control System from an office and other places





Nowadays, an elevator needs to accommodate the recent developments in data networks as a means of communication. The use of LAN (Local Area Network) and WAN (Wide Area Network) are exponentially expanding in our highly networked information society.

ELVIC, which has various information processing system functions, is an elevator monitoring system that is very suitable for smart buildings.

One of the main features of ELVIC is the ability to manage and control elevators by monitoring the current status of running elevators and giving necessary commands to elevators from a specific location, such as a central building management room or a disaster prevention center.

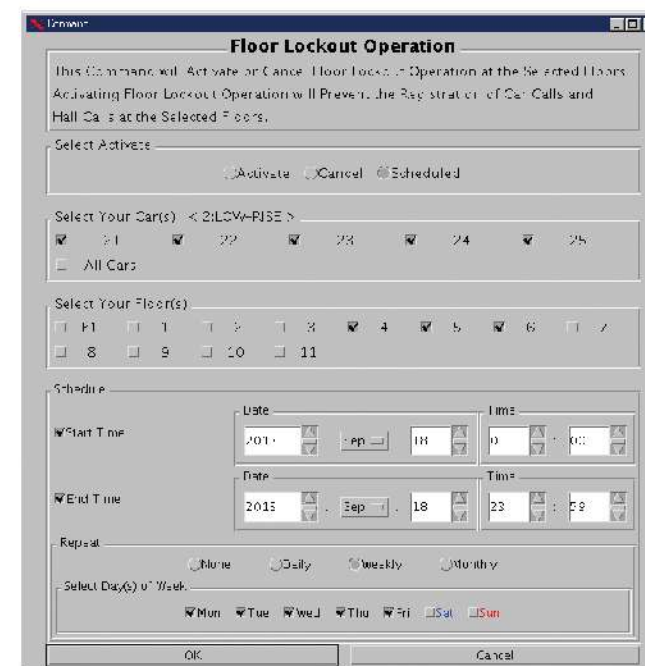
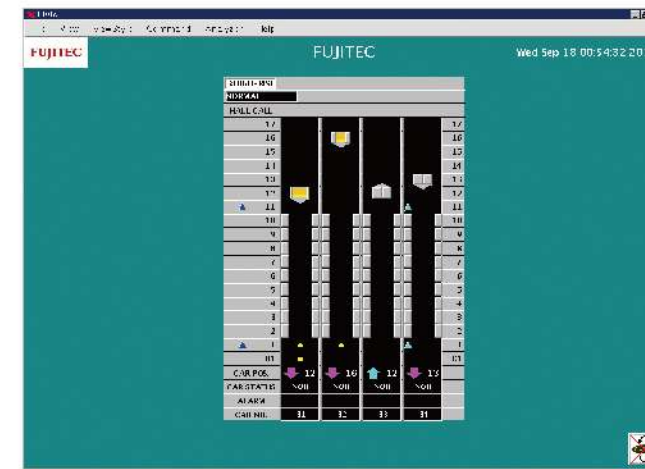
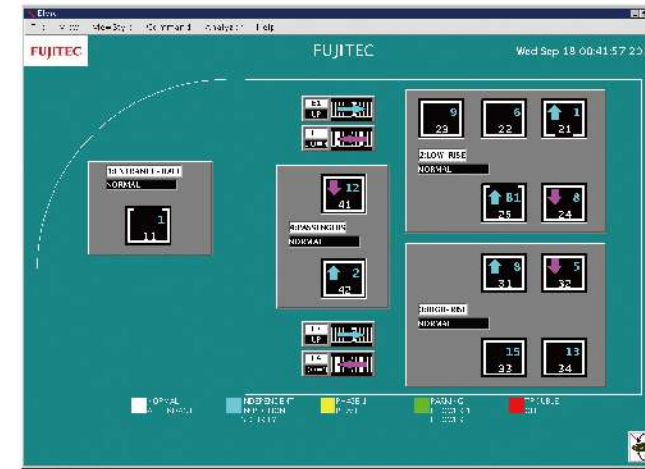
If a customer desires to access ELVIC system through remote display(s) located in another place, necessary sub-terminal(s) necessary for ELVIC operation will be provided.

If a smart building has already been equipped with its own central supervisory system to monitor building safety and facilities, the signals and commands of ELVIC can, if required, be transferred to such system.

As described above, ELVIC allows building management personnel to monitor real-time elevator movement as well as change elevator operation modes (for example, from normal operation to VIP Operation, etc.)

As an optional feature, ELVIC can function as an elevator traffic analyzer. The output data is used for performance assessment, preventive measures and other similar purposes.

# ELVIC FEATURES



- Monitoring available for elevator and escalator models
- Multiple Client PCs connectable to ELVIC system
- Dedicated Serial Communications
- Linux Operating System adopted for ELVIC server machine  
*best for continuous server operation due to reliability and stability*
- ELVIC server capable of additional display(s) elevator(s) and escalator(s) in the future
- GUI (Graphic User Interface) adopted for easy command input.

# SYSTEM FUNCTIONS

## Monitoring of the Operating Status of Elevators, Escalators and Moving Walks

### Elevators

Group control status	Elevator status	Emergency operations
Traveling direction	Elevator position	Door status
No-service floors	Hall calls/Car calls	Alarm

### Escalators/Autowalks

UP/DOWN operation	Abnormal stop	Emergency stop button
-------------------	---------------	-----------------------

### Command Issuance (optional feature at an additional cost)

#### 1. Elevator Commands

Parking operation	VIP operation
Independent operation	Floor lockout operation
Express operation	Return to designated floor

#### 2. Group Commands

Up-peak/Down-peak/Lunch time operation	Change of main floor
Zoning for express operation	Car call disconnect

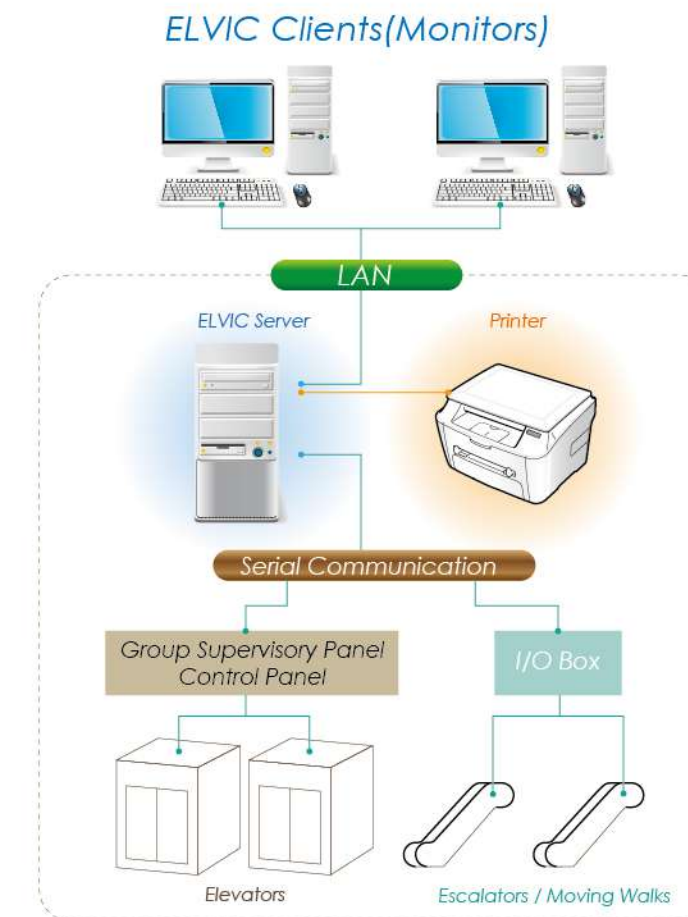
### Traffic Analysis (optional feature at an additional cost)

Traffic analysis application provides building management personnel with information regarding elevator movement and usage conditions by displaying images based on the collected log data. The average waiting time and the rate of long-intervals experienced by a passenger or passengers can also be analyzed and printed out.

**FUJITEC**  
elevator visual communication system  
**ELVIC**

# SYSTEM CONFIGURATION

- Server machine to be connected to elevator system by Serial Communications
- Serial communications operate independently from those of other equipment  
*(Elevator system is not damaged by a failure or breakdown of other electrical equipment in the building, as well as other equipment not being damaged by an elevator system failure or breakdown.)*
- Dry contacts to be provided at a contact point between an escalator and ELVIC system
- Dedicated interface also able to communicate with elevators from other manufacturers



Personal Computer for Server	
CPU	Intel Core i3 or later
Memory	2GB or more
HDD	250GB or more
ROM	Required
Serial Port	Required
Mouse	USB Mouse
Keyboard	USB Keyboard
Display for Server <small>[Standard Specifications]</small>	
Size	LCD-19 inches or more
Resolution	1280 x 1024 or greater
Printer <small>[Standard Specifications]</small>	
Printer Language	PostScript Level 3
Interface	USB or Ethernet
I/O Box <small>[Standard Specifications]</small>	
Outside Dimensions	430 x 350 x 71 [mm]
Maximum Number of Connectable Escalators	12 units (per I/O Box)

The ELVIC computer(s), printer(s), display(s) and accessories will be supplied by Fujitec. Communication cables and ducts outside elevator hoistway(s), machine room(s) and escalator installation place(s) shall be procured and laid by others.

**FUJITEC** and ELVIC are either registered trademarks or trademarks of Fujitec Co., Ltd. or its affiliated companies in Japan and/or other countries. Linux is a registered trademark or a trademark of Linus Torvalds or its affiliated companies in the U.S. and/or other countries. Intel and Intel Core are either registered trademarks or trademarks of Intel Corporation or its affiliated companies in the U.S. and/or other countries. PostScript is a registered trademark or a trademark of Adobe Systems Incorporated or its affiliated companies in the U.S. and/or other countries.

Screen display illustrations in this brochure may differ from actual images. Specifications in this brochure may change without any notice.



**FUJITEC**

[www.fujitec.com](http://www.fujitec.com)